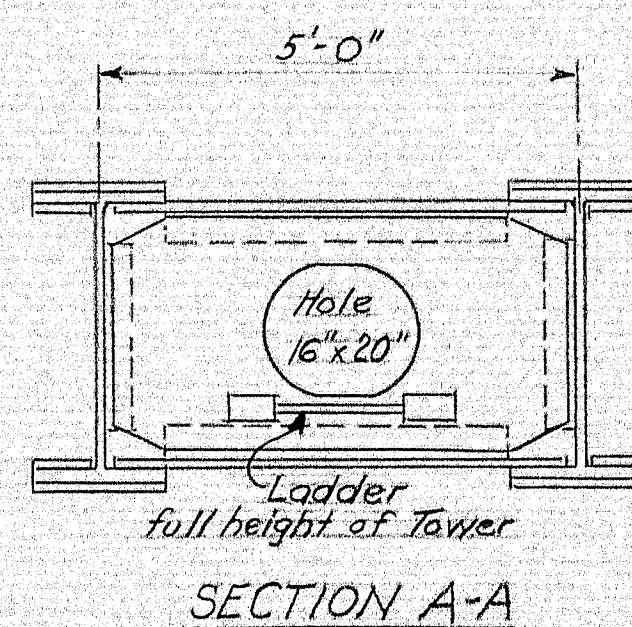
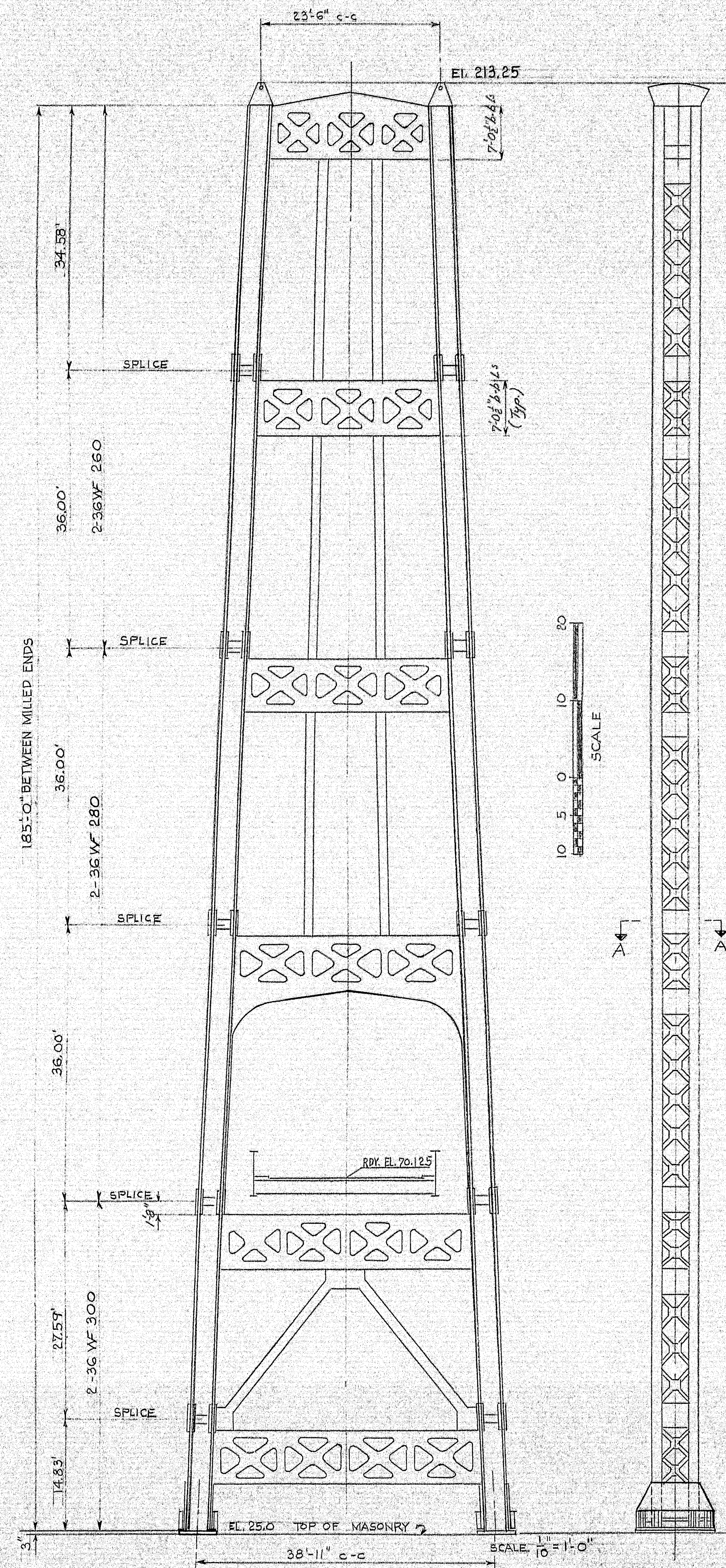
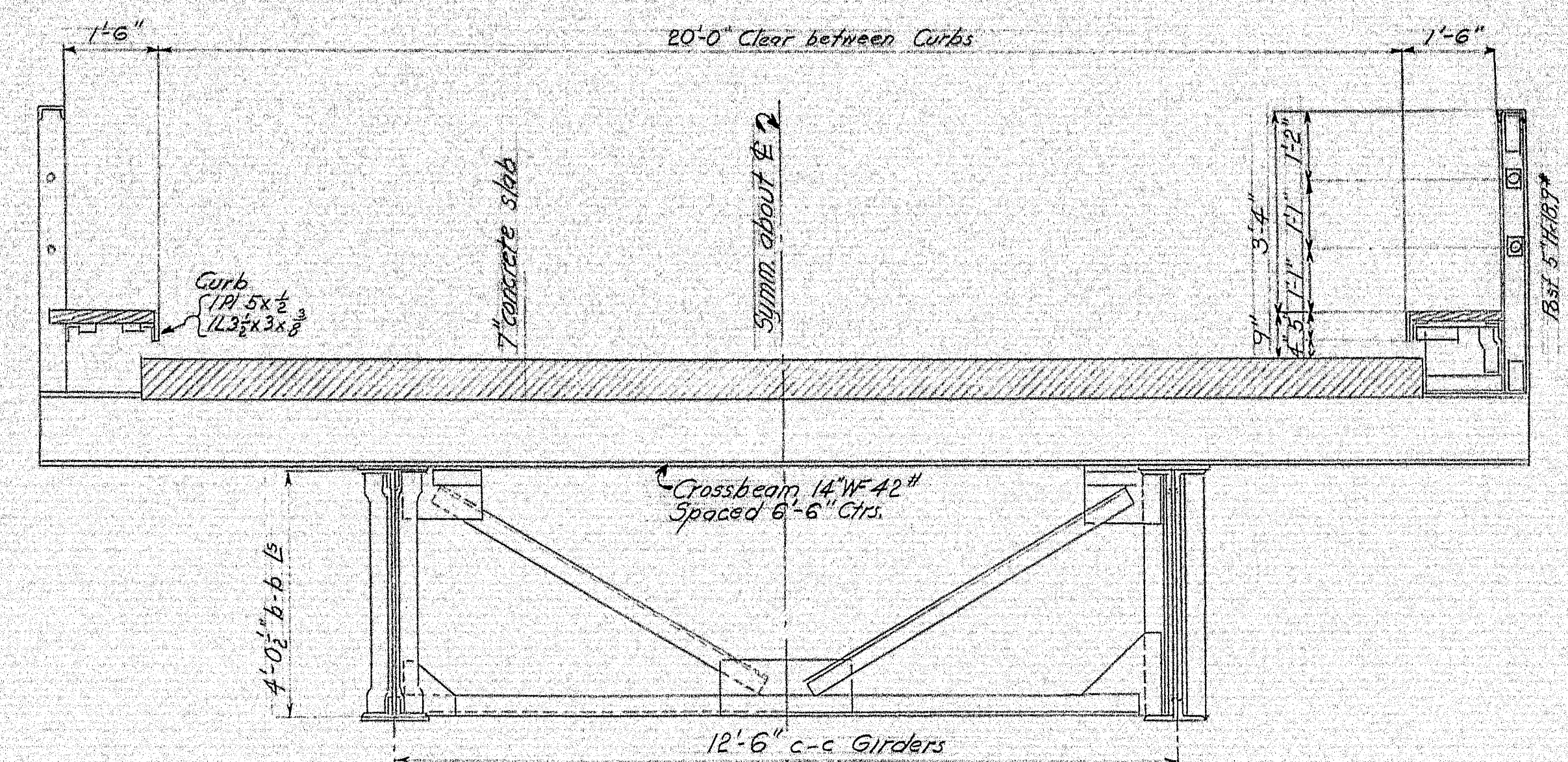


| B.P.R. REG. NO. | STATE | PROJECT NUMBER | SHEET NO. | TOTAL SHEETS |
|--------------------|-------|----------------|--------------|-----------------|
| 1 | MAINE | | | |



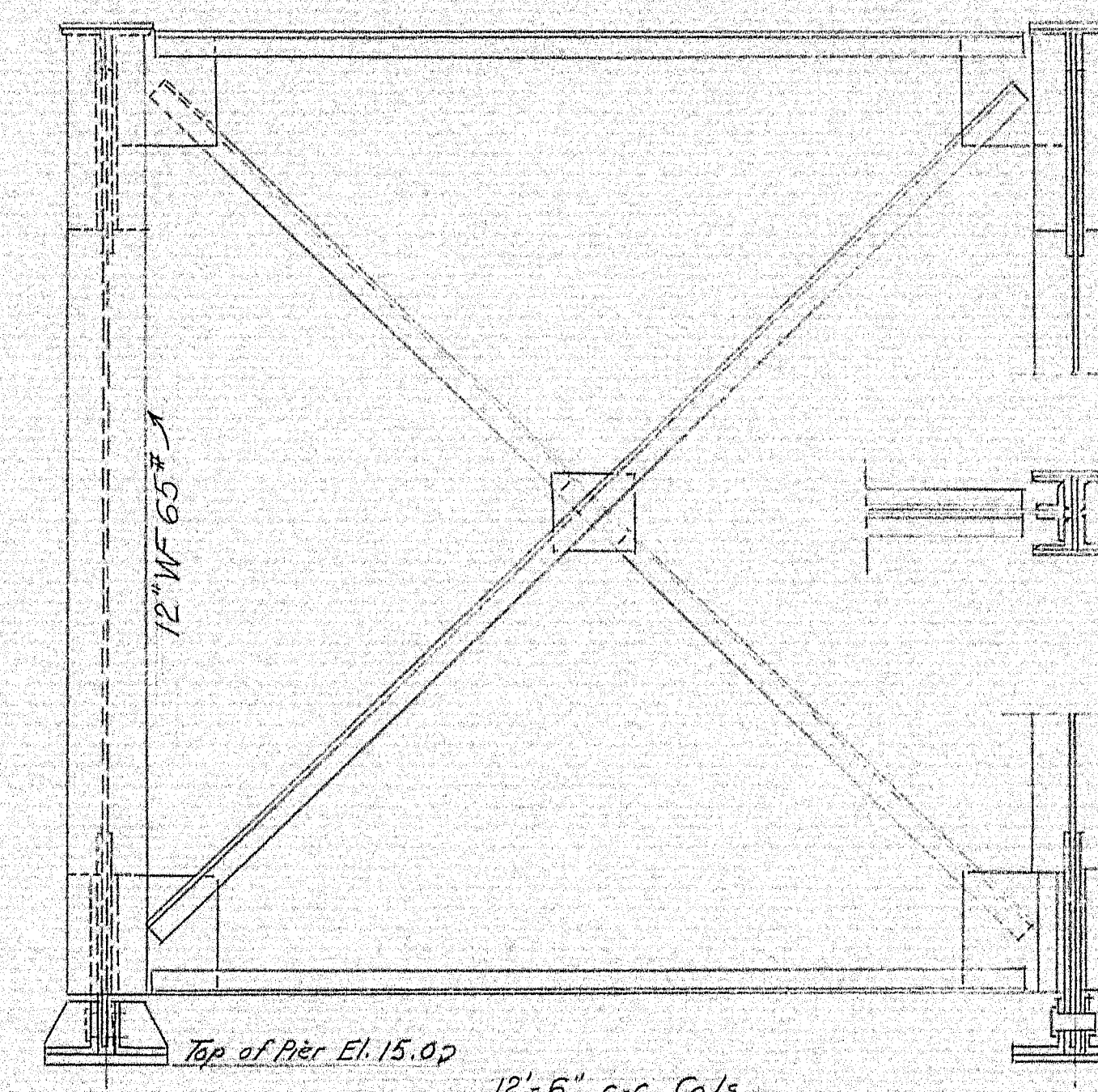
SECTION A-A



HALF INTERMEDIATE SECTION HALF CROSS-SECTION AT SUPPORT

VIADUCT CROSS SECTION

SCALE $\frac{1}{2}$ " = 1'-0"



VIADUCT BENT DETAILS (At Piers #2 & #7)

SCALE $\frac{1}{2}$ " = 1'-0"

| | |
|--|------------------------------------|
| DESIGN- TRACE- CHECK- | BRIDGE NO. 3257 SURVEY- PLOT |
| STATE HIGHWAY COMMISSION BRIDGE DIVISION DEER ISLE SEDGWICK BRIDGE OVER EGGMOGGIN REACH Between the Towns of DEER ISLE AND SEDGWICK-HANCOCK CO., MAINE | |
| FIELD PAINTING MAIN TOWER AND VIADUCT DETAILS | |
| SHEET 2 OF 2 AUGUSTA, MAINE May, 1966 | |

101-65A

